



 **Hazlemere**

The *right choice*  
for your home  
improvement  
project



[www.hazlemere.co.uk](http://www.hazlemere.co.uk)  
WINDOWS • DOORS • LIVING SPACES

# 1

---

## HERITAGE & VALUES

*Our family business cares about your family home.*

Hazlemere Window Co. was set-up by the Braham family in 1985 and is still independently owned and run by them today. Stuart Braham has been involved since day one, initially developing the company with his father and brothers. It is now his daughter Rachel who manages the day-to-day as Managing Director, with Stuart at the helm overseeing strategy and group decisions.

Numerous other family members work throughout the business, and many of the team have worked here so long they feel like family too, and indeed have recruited their own relatives to our expanding team.

We know a lot of our success is with thanks to this unique sense of family, which is deeply rooted throughout the business. We think a family company with a great team spirit is just the right choice for you to entrust your family home to. We really care about your home improvement project and like any family, we will support each other to give you the service and quality you deserve.

A high percentage of our business is gratefully received from repeat customers and customer recommendations to their own family and friends.

INDEPENDENTLY  
OWNED SINCE

1985



**Family is definitely the cornerstone of  
Hazlemere's success.**



**A visit to the  
showroom  
can prove  
invaluable in  
ensuring you  
get the very  
best result.**



# 2

## OUR SHOWROOMS

*Our showrooms are our shop windows and we have invested extensively to create displays that best showcase our large range of windows, doors and living spaces.*

You will receive a warm welcome, a coffee, and the choice to browse at your leisure without interruption or have some product guidance from one of our knowledgeable team if you prefer. There is always someone on hand to talk you through the options and technical details if you want them.

Our bespoke product range is extensive, so a visit to the showroom can prove invaluable to ensure you get the very best result with your home improvement project. Our brochures and website try to illustrate details such as finish and colours as clearly as possible but

there is no substitute to actually being able to see the products up close, and see how they operate. All of our window profiles are on show, a wide selection of doors and a range of conservatory and orangery styles.

And for the detailing; handle options, obscure glass designs, door furniture, everything you need to help you make those all important decisions on what you want for your own home.

The showrooms have also been tastefully decorated by our own interior design team so may also provide you with inspiration for décor and furnishings.



# 3

## APPOINTMENT FOCUS

*The highest quality service with you and your home in mind.*

Firstly, don't worry that we'll outstay our welcome. We won't want to spend hours at your house and we certainly don't employ the out-dated sales tactics that some less reputable companies choose to use.

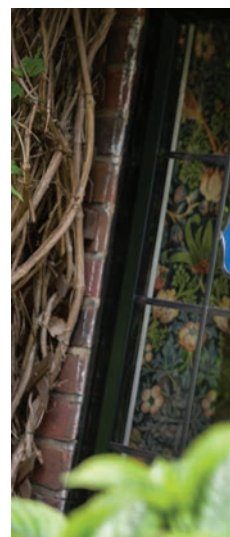
We are available to visit you during weekdays, evenings and weekends so should have no problem finding a time to suit you. One of our design consultants will meet you at your property to discuss your requirements, do a preliminary survey and take the measurements required to provide you with your bespoke quote.

At this stage we're just checking for any obvious issues that could make installation a little trickier than usual.

Feel free to ask us any questions you have, our design team are all very experienced so can give you great advice not only on design, but also about the full product range and all the technical details. And if they don't know the answer they have a large and experienced team behind them who will.

There will be no pressure for you to make any instant decision. We'll leave the details with you. We always recommend a visit to one of the showrooms to see the products you are interested in first hand.

When you are happy to proceed just let us know and we'll take it from there.





**There will be  
no pressure for  
you to make any  
instant decision.  
We'll leave the  
details with you.**

---

## VIRTUOSITY DESIGN STUDIO

---

**Hazlemere VR will help you visualise exactly how the completed project will add to your home ►**

Our design studio has developed a suite of options to help our customers make those all important decisions about their next project.

From computer generated window drawings that clearly illustrate proposed window designs, a composite door designer app to show you how your chosen door will look on your own house, or a fully bespoke 3D walkthrough of your new conservatory in situ, we will help you visualise your important plans, all developed from an initial photograph of your house.



“We found the 3D design and walkthrough so helpful in bringing the project to life. It differentiated Hazlemere from other companies that we talked to about our development. Along with the personal recommendations that we had about Hazlemere, the 3D design gave us the confidence to place an order having such a clear view of how the final outcome would look.”

Mr and Mrs Scanlon, Hazlemere

BEFORE



AFTER



The right product will certainly drive kerb appeal



# 4

## DESIGN FOCUS

*Fitting in perfectly with your space and lifestyle.*

More and more of our customers are replacing their windows and doors to improve the aesthetic of their property, not just to reduce energy bills or improve security. Slimmer frames or a change of colour can really give a property a lift and with our wide range of profiles, door options and extensive colour ranges we can design bespoke product with just the right look for you.

Our design consultants will work with you to give you the best possible return on your investment. With hundreds of installations every year the

Hazlemere team know what will really make your home improvements stand out, and deliver that all important kerb appeal. We'll recommend products that will suit your property and budget, and help you get a step closer to your dream home.

If it is an extension you are dreaming of then our team will create the perfect design to make the additional space work for you and your family and fit perfectly with the look and feel of your existing space.



# 5

## OUR SURVEYORS

*Carrying out a process of the highest standard.*

Once you have placed your order with Hazlemere the first step will be for our surveying team to visit to perform a thorough survey and take the measurements that we will manufacture to. With an entirely bespoke product range our surveyors play an important role and must be experts in their field. The last thing you want is an incorrectly sized window or door turning up on installation day and we also need to make sure all necessary legislation and planning requirements are being met.

We employ our own in-house surveyors to maintain training and quality standards, and we are rightly proud of our experienced team. Not only do they have years of survey experience behind them but they have also earned their stripes within our own factory and fitting teams gaining a unique insight into the delivery and perfect installation of your windows, doors and glass extensions.





# 6

## UK MANUFACTURE

Hazlemere has its own manufacturing facility based alongside its head office in High Wycombe, Bucks.

Our 56,000 sq ft factory building houses the latest CNC machinery, a team of skilled fabricators, CNC operators, warehouse staff, drivers and a technical support team.

We fabricate our own aluminium windows and doors for both our retail customers and our large commercial department who deliver substantial requirements for windows and doors in apartment blocks, housing developments and the like.

Our UPVC products are manufactured by our partner,

The Conservatory Outlet, from their own factory in Wakefield. We have enjoyed a long and successful partnership with The Conservatory Outlet, thanks in part to their own substantial investment in the latest technology, machinery and employee training programme to match our own exacting standards.

The experience of our production and manufacturing team also allows Hazlemere to lead the way in our industry, with product improvements and exclusive designs, including the beautiful, sleek Sculptured window system, exclusively available from Hazlemere.





**From choosing to fitting the right product, our experienced team will help you find your perfect home solution.**



# 7

## INSTALLATION FOCUS

*A high quality installation is as important as a high quality product.*

Hazlemere only employ the best fitters, those skilled craftsmen we would trust with our own homes. We know that whilst you may have your heart set on new windows, or the conservatory you've been visualising on the back of your house, the thought of the upheaval and mess can be totally off putting. We expect only the highest standards from our fitting teams, they will work tidily and clear up after themselves. They will be polite, be sensitive to your neighbours and most importantly, treat your home with total respect.

Many of our fitters have worked with us for years, they are part of the Hazlemere family, and a number of them are actually related; parents, siblings, cousins, supporting each other and passing on their skills through the generations. To be able to guarantee our quality, energy efficiency and highly secure products we must also deliver a high quality installation to match. Our professional installers are specialists in their fields and we have different teams for window and door installations, living spaces and roofline and cladding so you get the standard of installation your home deserves.

# 8

## SERVICE & AFTERCARE

*All of the products in the Hazlemere range come with a comprehensive 10 year guarantee.*

Not only do we promise you quality products and expert fitting, we'll also be there for **the next 10 years** to correct any issues that may crop up. If a lock becomes troublesome, or closing a door is no longer as smooth as it once was, then simply call our dedicated service department who will arrange a visit to rectify the problem.

We employ our own service engineers, so they know the products inside out and have all the skills needed to identify issues and make repairs.

Our guarantee period is also assured with insurance backed warranties on every window, door and living space installation. So in the very unlikely event Hazlemere is not around to fix an issue, your insurance will make sure you have someone to call to sort out the problem for you. But we don't expect any of our customers to ever need this additional cover, as we plan on being around for another 30 years, and then some.



98%  
OF CUSTOMERS  
RECOMMEND

# TESTIMONIALS

*Don't take our word for it. 98% of customers would recommend us to friends and family.*

Exceptional service and a quality product. This was the 4th time we have used HWC and they never disappoint.

Michael Dunn,  
High Wycombe

Extremely pleased with the product and installation. All staff were very professional, polite, arrived when expected and left everything tidy.

Anita Harper,  
Uxbridge

I can thoroughly recommend Hazlemere. They take no payment up front, spot faults and correct them politely and promptly - unusual service!

Mel Hilbrow,  
St Albans

## BADGES & AFFILIATIONS



Glass & Glazing Federation



Registered Company 10589

## CONTACT US

Call us to book your appointment on  
01494 536000 / 01707 325560



[www.hazlemere.co.uk](http://www.hazlemere.co.uk)



**High Wycombe Showroom**

Wellington Road, Cressex Industrial  
Estate, High Wycombe, Buckinghamshire  
HP12 3PR • 01494 536000

**Welwyn Garden City Showroom**

Unit 10 Little Mundells Industrial Centre,  
Little Mundells, Welwyn Garden City,  
Hertfordshire AL7 1EW • 01707 325560



WINDOWS • DOORS • LIVING SPACES  
[www.hazlemere.co.uk](http://www.hazlemere.co.uk)